

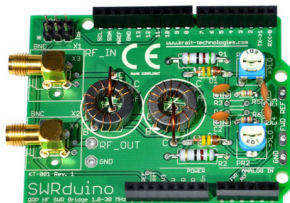
RF & HAM EQUIPMENT



SWRduino

Mfr. No: KT-001K (kit)

New tool for RF experiments with Arduino Uno board



- Highly integrated QRP HF band SWR bridge up to 20 W
- Full compatibility with Arduino™ Uno board
- Tandem Match configuration for best directivity
- Only THT components for easy assembly
- Easy access to measured values (P fwd and P ref) from ANALOG_IN input section
- Germanium diodes for best sensitivity
- Optional trimmers for precise adjusting
- SMA connectors for size critical applications (optional also BNC connectors)
- Equipped with ISP connector (2x3 pin header)
- Only passive components; no current consumption

RF Dummy Load

Mfr. No: KT-002K (kit) or KT-002A (assembled)

Cost effective HF + 6 m band 50R RF dummy load

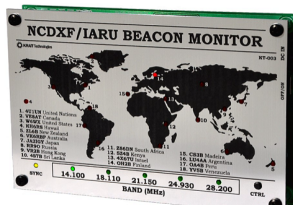


- Cost-effective HF + 6 m band 50R RF dummy load
- 100 W continuous power handling
- 300 W peak power handling capability
- Low VSWR levels up to 54 MHz
- UC-1 (PL-259) RF input connector
- Built-in fan for reliable continuous operation
- 2.1x5.5 DC input connector for the fan supply
- THT components for easy assembly

NCDXF/IARU Beacon Monitor

Mfr. No: KT-003K (kit) or KT-003A (assembled)

Useful tool for monitoring NCDXF/IARU beacons

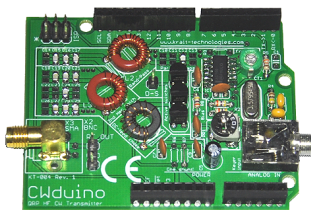


- A usefull tool for quick HF propagation condition check
- Time synchronized with built-in GPS receiver
- SYNC LED for monitoring synchronization state
- CTRL button for band change
- External DC_IN connector
- Optional battery operation: 3x AAA (holes for a battery holder)
- Current consumption: 60 mA @ 9.0 V
- Input voltage range: 5.5-18.0 VDC
- THT components only for easy assembly

CWduino

Mfr. No: KT-004K (kit)

Superportable CW transmitter for Arduino Uno board with keyer input

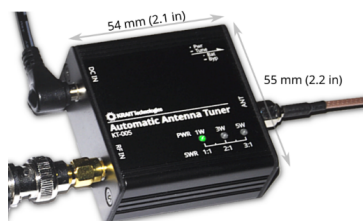


- Highly integrated CW transmitter compatible with Arduino Uno board
- HF band coverage: 80, 40 and 20 m (depends on version)
- Class-E topology for high efficiency
- Built-in 2nd harmonic notch filter to meet CFR requirements (-43 dBc)
- 500 mW RF output power from 5 VDC Arduino's power supply rail
- 2000 mW RF output power at 9 VDC
- Precise frequency adjustment via trimmer
- Keyer input connector (mini-jack)
- Example projects for Arduino: CW Beacon and CW keyer available free for download

QRP Automatic Antenna Tuner

Mfr. No: KT-005K (kit) or KT-005A (assembled)

Ultra portable QRP ATU



- **World's smallest QRP Automatic Antenna Tuner (ATU) available on the market**
- Designed to be compatible electrical/mechanical with the QCX-mini® and QMX-mini®
- Great choice for all operators looking for the best portable equipment (POTA, SOTA,...)
- ATU can works with any type of radio in any mode (SSB, CW, PSK, WSPR,...)
- Auto Power Off function for zero current consumption when tuned
- High grade (Fujitsu) reliable mechanical latch type relay
- Durable lightweight aluminum housing: black anodised with laser-engraved symbols
- SMA female sockets for maximum miniaturization
- LED indicators for RF power level, VSWR value, battery voltage
- Low-battery detection when powered by a 9V battery
- Two control buttons for easy operation
- Reverse polarity protection

World's smallest QRP ATU

An information furnished by KRAIT Technologies is believed to be accurate and reliable. However, no responsibility is assumed by KRAIT Technologies for its use, nor for any infringements of patents or other rights of third parties that may result from its use. Due to continuous product improvements, specifications are subject to change without notice. Typographical and other errors do not justify any claim for damages. All trademarks and registered trademarks are the property of their respective owners.

QCX-mini and QMX-mini are registered trademark of QRP Labs. The Arduino Uno is a registered trademark of Arduino SA.

www.krait-technologies.com

© 2026 KRAIT Technologies
Rev. 1 Published 01/2026

